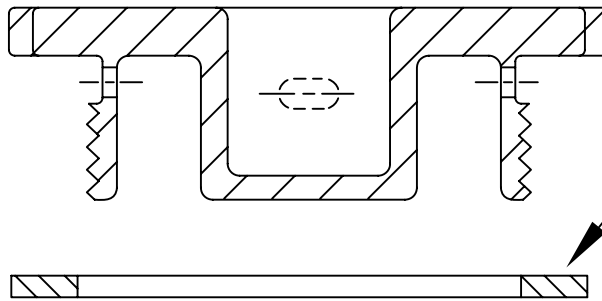


SAFBUNG ADAPTOR FOR TORQUE WRENCH #110897



SAFBUNG - AMI #110885

BUNG GASKET - AMI #113843

NOTE:
 THE TORQUE SPEC. FOR SAFBUNG (AMI #110885)
 WHEN USED WITH BUNG GASKET (AMI #113843)
 AND ADAPTER #110897 IS 25-30 FT. LBS.

ZONE	REV	REVISION DESCRIPTION	DATE	REVISED BY	APPROVED BY
UNLESS OTHERWISE SPECIFIED DIMENSIONS ARE IN INCHES GENERAL TOLERANCES		PROJECTION 	DO NOT SCALE THIS DRAWING BREAK ALL SHARP EDGES REMOVE BURRS & FLASH	AMERICAN MACHINING, INC. FENTON, MICHIGAN	
FRACTIONS: $\pm 1/32$.XX DECIMALS: $\pm .010$.XXX DECIMALS: $\pm .005$.XXXX DECIMALS: $\pm .001$	ANGLES: $\pm 1^\circ$	FINISH: CAST <input checked="" type="checkbox"/>
THIS DRAWING HAS BEEN FURNISHED BY AMERICAN MACHINING, INC. THE INFORMATION AND KNOW-HOW CONTAINED MAY NOT BE USED NOR MAY THE DRAWING BE REPRODUCED WITHOUT THE WRITTEN PERMISSION OF AMERICAN MACHINING, INC. ALL REPRODUCTIONS IN WHOLE OR IN PART, INCLUDING VENDOR SHOP DRAWINGS, SHALL BEAR OR REFER TO THIS NOTE.			SPECIAL FINISH: N/A	DESCRIPTION TORQUE SPECS. FOR SAFBUNG REF. AMI #110885	
DRAWN BY: R. KING		12-28-99	SIZE A	PART NUMBER 110885-INST	REV -
APPROVED BY: _____		DATE _____	SCALE: NONE	MAT'L: S/S / EPDM	SHEET 1 OF 1