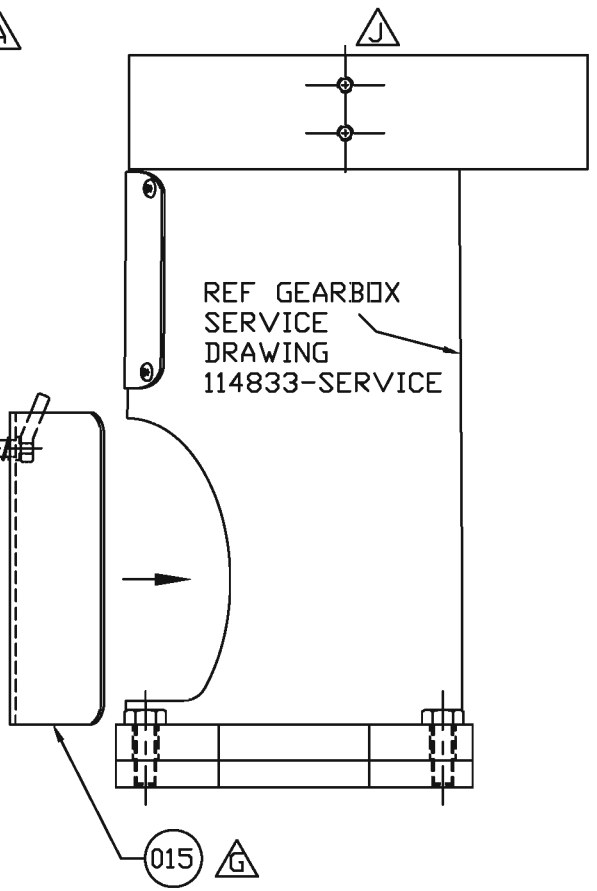
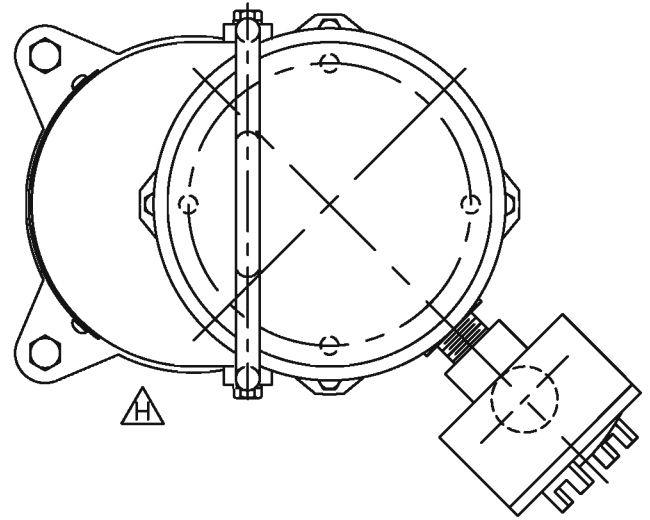
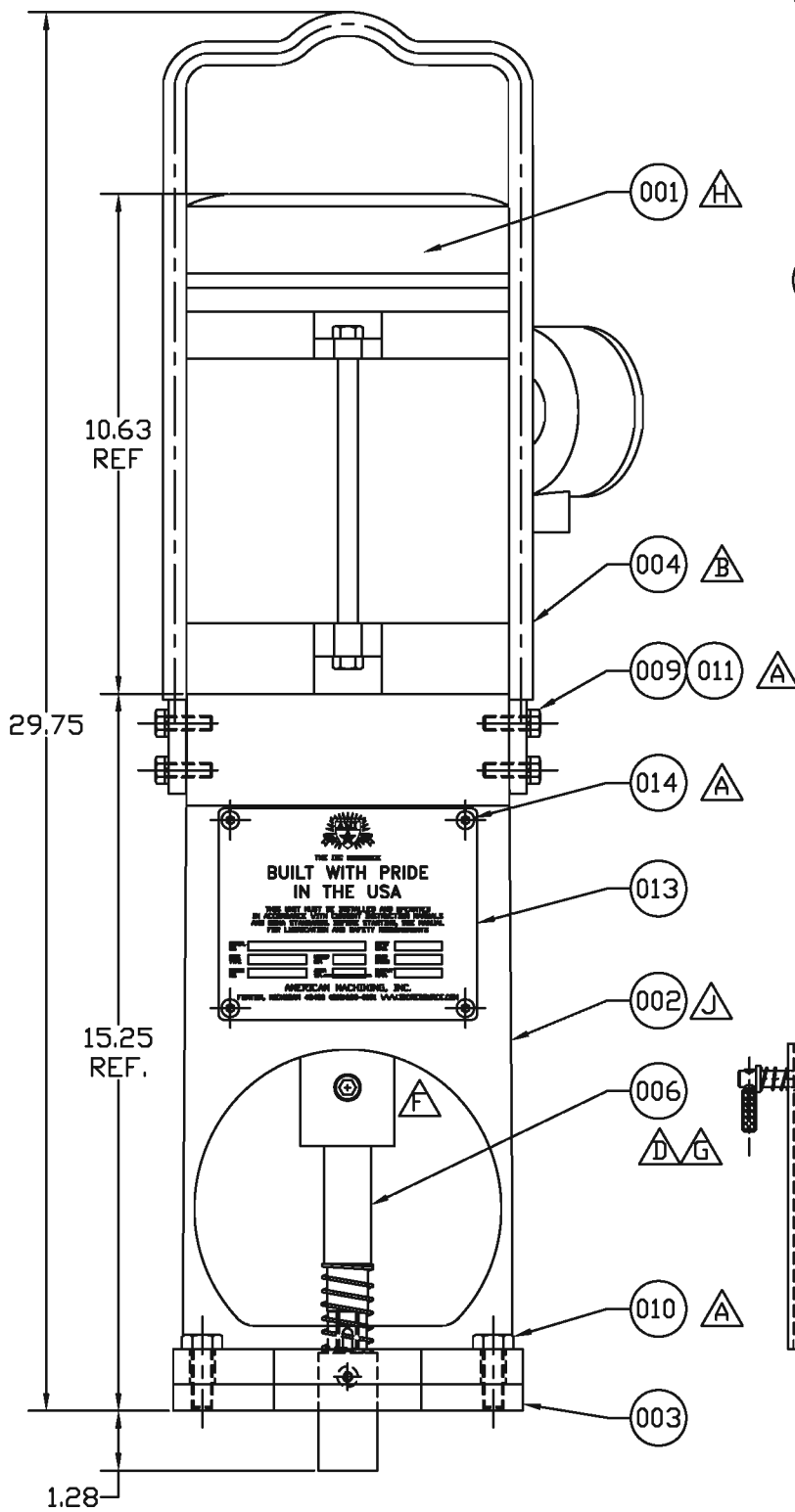


B

A



REVISIONS

ZONE	REV	DESCRIPTION	DATE	REVISED BY	APPROVED BY
-	A	CHANGED SCREW - ITEM #14 FROM 112311 TO 112972	12-22-99	R.J.K.	G.P.S.
-	A	CHANGED SCREW - ITEM #9 FROM 110037 TO 112975	12-22-99	R.J.K.	G.P.S.
-	A	CHANGED WASHER - ITEM #11 FROM 110636 TO 112755	12-22-99	R.J.K.	G.P.S.
-	B	CHANGED ITEM #4 FROM 112949 TO 113233	03-24-00	R.J.K.	G.P.S.
-	C	CHANGED SPRING - ITEM #7 FROM 110312 TO 113545	03-20-01	R.J.K.	G.P.S.
-	D	ADDED SHAFT DIMPLING INFO	04-03-01	R.J.K.	G.P.S.
-	D	CHANGED CHAMFER FROM .03 TO .075 ON MIXER DRIVE OUTPUT SHAFT	04-03-01	R.J.K.	G.P.S.
-	E	CHANGED ITEM #12 FROM SQUARE HEAD TO BUTTON HEAD	04-11-01	R.J.K.	G.P.S.
-	F	CORRECTED THREAD CALL-OUT	02-04-02	M.C.S.	G.P.S.
-	F	REDRAWN TO SCALE	02-04-02	M.C.S.	G.P.S.
-	F	REMOVED DETAIL #5 (WAS 112866 SET SCREW)	02-04-02	M.C.S.	G.P.S.
-	F	ADDED DRIVE SHAFT MODIFICATION NOTE	02-04-02	M.C.S.	G.P.S.
-	G	ADDED PN 114090 - GUARD ASSY.	02-04-02	M.C.S.	G.P.S.
-	G	REMOVED DET #7 (113545), DET. #8 (112832), AND DET. #12 (112933)	02-07-02	M.C.S.	G.P.S.
-	G	DET. #6 WAS 112833	02-07-02	M.C.S.	G.P.S.
-	H	MOTOR SHAFT NOTE REMOVED / ADDED 3RD VIEW / UPDATED DET. 001	10-21-03	M.C.S.	B.R.
-	J	DETAIL 002 WAS 112839 / REMOVED NOTE	12-03-03	M.C.S.	B.R.



DETAIL	QTY.	PART NO.	DESCRIPTION
001	1	112938	MOTOR - 1 HP ELECTRIC EXPLOSION PROOF
002	1	114834	GEARBOX - W/ TAPPED HOLES @ 4-1/2"
003	1	112859	FLANGE - DRIVE ADAPTER / QUICK CONNECT BASE 1020 HRS
004	1	113233	HANDLE - 1/2" DIA HVY DUTY LIFTING CRS
005	---	---	---
006	1	113981	ADAPTER - HEX SHAFT ASSEMBLY
007	---	---	---
008	---	---	---
009	4	112975	SCREW - 5/16-18 X 1" LG HHCS ZINC PLT
010	4	112867	SCREW - 7/16-20 X 1-1/4" LG HHCS GR 8 ZINC
011	4	112755	WASHER - 5/16 SPLIT LOCK ZINC PLT
012	---	---	---
013	1	111645	TAG - 16 GA X 4-1/2" X 5-1/2" AMI ID 304 SS
014	4	112972	SCREW - 1/4-20 X 3/8" LG BUTTON HD CAP 18-8 SS
015	1	114090	GUARD ASSY. - DRIVE MOTOR

UNLESS OTHERWISE SPECIFIED DIMENSIONS ARE IN INCHES GENERAL TOLERANCES FRACTIONS: .XX DECIMALS: ± 1/16 .XXX DECIMALS: ± .010 .XXXX DECIMALS: ± .005 .XXXXX DECIMALS: ± .001 ANGLES: ± 1°		PROJECTION 	DO NOT SCALE THIS DRAWING BREAK SHARP EDGES REMOVE BURRS & FLASH	AMERICAN MACHINING, INC. FENTON, MICHIGAN
THIS DRAWING HAS BEEN FURNISHED BY AMERICAN MACHINING, INC. THE INFORMATION AND KNOW-HOW CONTAINED MAY NOT BE USED NOR MAY THE DRAWING BE REPRODUCED WITHOUT THE WRITTEN PERMISSION OF AMERICAN MACHINING, INC. ALL REPRODUCTIONS IN WHOLE OR IN PART, INCLUDING VENDOR SHOP DRAWINGS, SHALL BEAR OR REFER TO THIS NOTE.		FINISH: AMI RED LAQUER ✓ SPECIAL FINISH: N/A DRAWN BY: R. KING CHECKED BY: B. REICH	DATE: 11-22-99 12-03-03	DESCRIPTION DRIVE - 1 HP ELEC. EXPLOSION PROOF W/ HEX OUTPUT CONNECTION
APPROVED BY: _____ DATE: _____		SIZE: B	PART NUMBER: 112937-SERVICE	REV: J
SCALE: 1/4		MAT'L: AS NOTED		SHEET 1 OF 1

