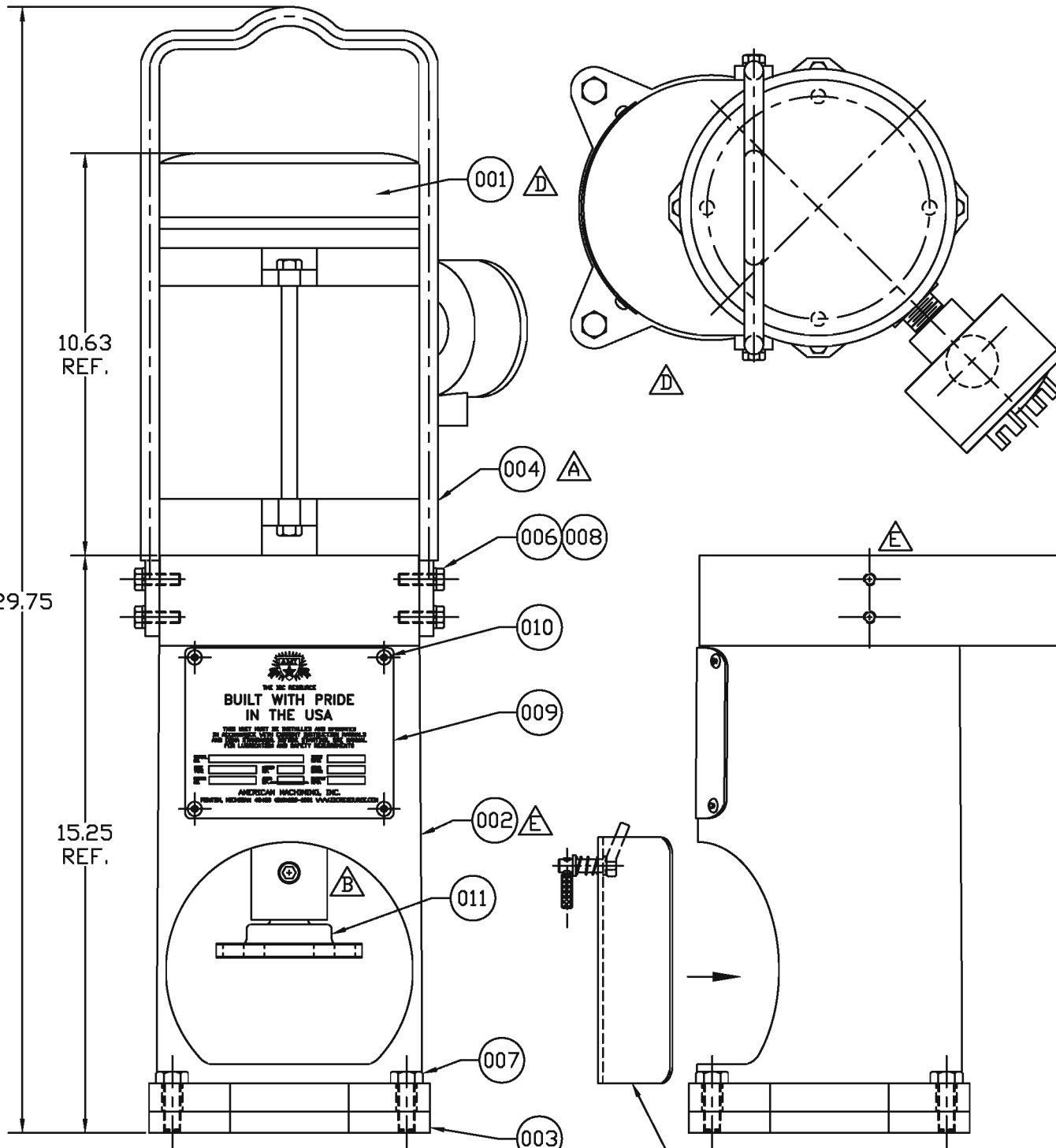


B

A



10.63 REF.

29.75

15.25 REF.

BUILT WITH PRIDE IN THE USA

IN.	MM.	IN.	MM.

AMERICAN MACHINES, INC.

INSTALL GUARD PRIOR TO USE

REVISIONS

ZONE	REV	DESCRIPTION	DATE	REVISED BY	APPROVED BY
-	A	CHANGED ITEM #4 FROM 112949 TO 113233	03-24-00	R.J.K.	G.P.S.
-	B	CORRECTED THREAD CALL-OUT	02-04-02	M.C.S.	G.P.S.
-	B	REDRAWN TO SCALE	02-04-02	M.C.S.	G.P.S.
-	B	ADDED DRIVE SHAFT MODIFICATION NOTE	02-04-02	M.C.S.	G.P.S.
-	B	REMOVED DETAIL #5 (WAS 112866 SET SCREW)	02-04-02	M.C.S.	G.P.S.
-	C	ADDED PN 114090	02-04-02	M.C.S.	G.P.S.
-	D	MOTOR SHAFT NOTE REMOVED / ADDED 3RD VIEW / UPDATED DET. 001	10-21-03	M.C.S.	B.R.
-	E	DETAIL 002 WAS 112839 / REMOVED NOTE	12-03-03	M.C.S.	B.R.



DETAIL	QTY.	PART NO.	DESCRIPTION
001	1	112938	MOTOR - 1 HP ELECTRIC EXPL PROOF
002	1	114834	GEARBOX - W/ TAPPED HOLES @ 4-1/2"
003	1	112859	FLANGE - DRIVE ADAPTER / QUICK CONNECT BASE 1020 HRS
004	1	113233	HANDLE - 1/2" DIA HVY DUTY LIFTING CRS
005	---	---	---
006	4	112975	SCREW - HHCS ZINC PLT
007	4	112867	SCREW - HHCS GR 8 ZINC
008	4	112755	WASHER - SPLIT LOCK ZINC PLT
009	1	111645	TAG - 16 GA X 4-1/2" X 5-1/2" AMI ID 304 SS
010	4	112972	SCREW - BUTTON HD CAP 18-8 SS
011	1	112966	COUPLING - 3.87" DIA X 3" LG DRIVE OUTPUT
012	1	114090	GUARD ASSY. - DRIVE MOTOR

UNLESS OTHERWISE SPECIFIED
DIMENSIONS ARE IN INCHES
GENERAL TOLERANCES

FRACTIONS:	.XX DECIMALS:	.XXX DECIMALS:	.XXXX DECIMALS:	ANGLES:
± 1/16	± .010	± .005	± .001	± 1°

THIS DRAWING HAS BEEN FURNISHED BY AMERICAN MACHINING, INC. THE INFORMATION AND KNOW-HOW CONTAINED MAY NOT BE USED NOR MAY THE DRAWING BE REPRODUCED WITHOUT THE WRITTEN PERMISSION OF AMERICAN MACHINING, INC. ALL REPRODUCTIONS IN WHOLE OR IN PART, INCLUDING VENDOR SHOP DRAWINGS, SHALL BEAR OR REFER TO THIS NOTE.

PROJECTION

DO NOT SCALE THIS DRAWING
BREAK SHARP EDGES
REMOVE BURRS & FLASH

FINISH: N/A ✓
SPECIAL FINISH: N/A

DRAWN BY: R. KING 12-21-99
CHECKED BY: B. REICH 12-03-03

APPROVED BY: _____ DATE: _____

AMERICAN MACHINING, INC.
FENTON, MICHIGAN

DESCRIPTION
DRIVE - 1 HP ELEC. EXPLOSION PROOF
W/ QUICK CONNECT COUPLING

SIZE B	PART NUMBER 112976-SERVICE	REV E
------------------	--------------------------------------	-----------------

SCALE: 1/4 MAT'L: AS NOTED SHEET 1 OF 1