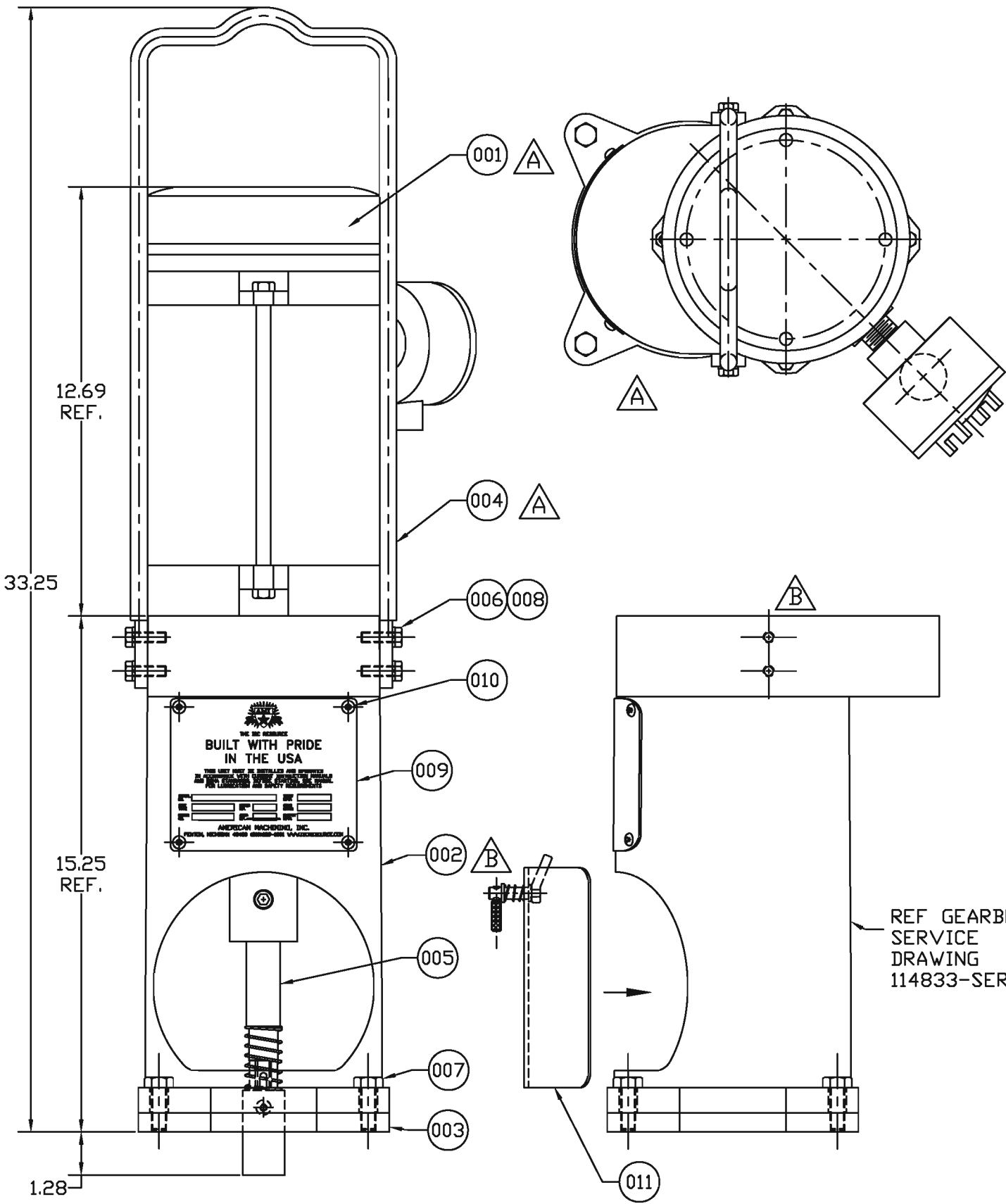


B

A



REVISIONS

ZONE	REV	DESCRIPTION	DATE	REVISED BY	APPROVED BY
-	A	MOTOR SHAFT NOTE REMOVED / DET. 004 WAS 113233	10-21-03	M.C.S.	B.R.
-	A	ADDED THIRD VIEW / UPDATED DETAIL 001	10-21-03	M.C.S.	B.R.
-	B	DETAIL 002 WAS 112839 / REMOVED NOTE	12-03-03	M.C.S.	B.R.

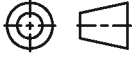

Ⓐ

Ⓐ

Ⓑ

Ⓐ

DETAIL	QTY.	PART NO.	DESCRIPTION
001	1	113636	MOTOR - 2 HP ELECTRIC EXPLOSION PROOF
002	1	114834	GEARBOX - W/ TAPPED HOLES @ 4-1/2"
003	1	112859	FLANGE - DRIVE ADAPTER / QUICK CONNECT BASE 1020 HRS
004	1	114288	HANDLE - 1/2" DIA HVY DUTY LIFTING CRS
005	1	113981	ADAPTER - HEX SHAFT ASSEMBLY
006	4	112975	SCREW - 5/16-18 X 1" LG HHCS ZINC PLT
007	4	112867	SCREW - 7/16-20 X 1-1/4" LG HHCS GR 8 ZINC
008	4	112755	WASHER - 5/16 SPLIT LOCK ZINC PLT
009	1	111645	TAG - 16 GA X 4-1/2" X 5-1/2" AMI ID 304 SS
010	4	112972	SCREW - 1/4-20 X 3/8" LG BUTTON HD CAP 18-8 SS
011	1	114090	GUARD ASSY. - DRIVE MOTOR

UNLESS OTHERWISE SPECIFIED DIMENSIONS ARE IN INCHES GENERAL TOLERANCES					PROJECTION 		DO NOT SCALE THIS DRAWING BREAK SHARP EDGES REMOVE BURRS & FLASH		 AMERICAN MACHINING, INC. FENTON, MICHIGAN						
FRACTIONS: ± 1/16	.XX DECIMALS: ± .010	.XXX DECIMALS: ± .005	.XXXX DECIMALS: ± .001	ANGLES: ± 1°	FINISH: AMI RED LAQUER ✓		DESCRIPTION DRIVE - 2 HP ELEC. EXPLOSION PROOF W/ HEX OUTPUT CONNECTION								
THIS DRAWING HAS BEEN FURNISHED BY AMERICAN MACHINING, INC. THE INFORMATION AND KNOW-HOW CONTAINED MAY NOT BE USED NOR MAY THE DRAWING BE REPRODUCED WITHOUT THE WRITTEN PERMISSION OF AMERICAN MACHINING, INC. ALL REPRODUCTIONS IN WHOLE OR IN PART, INCLUDING VENDOR SHOP DRAWINGS, SHALL BEAR OR REFER TO THIS NOTE.					SPECIAL FINISH: N/A		DRAWN BY: M. SCHULTE 02-04-02		SIZE B		PART NUMBER 113639-SERVICE		REV B		
					CHECKED BY: B. REICH 12-03-03		APPROVED BY: _____		DATE: _____		SCALE: 1/4		MAT'L: AS NOTED		SHEET 1 OF 1